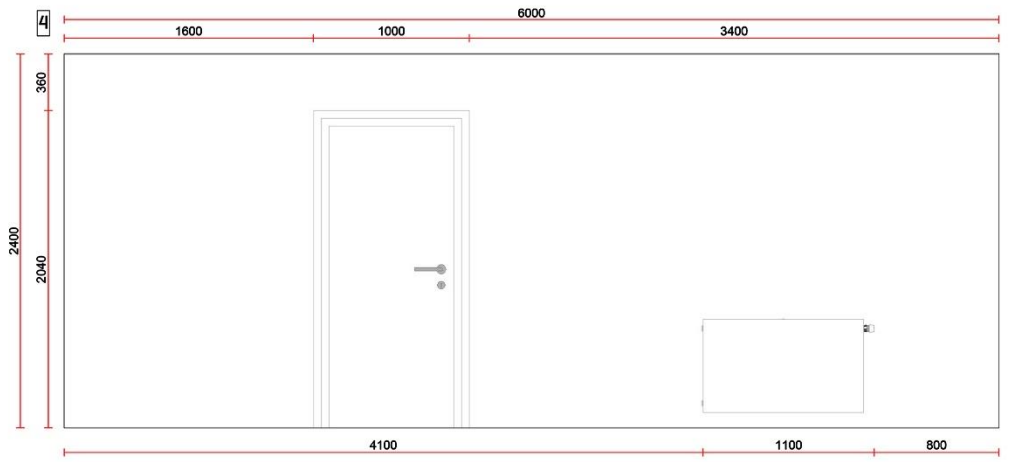
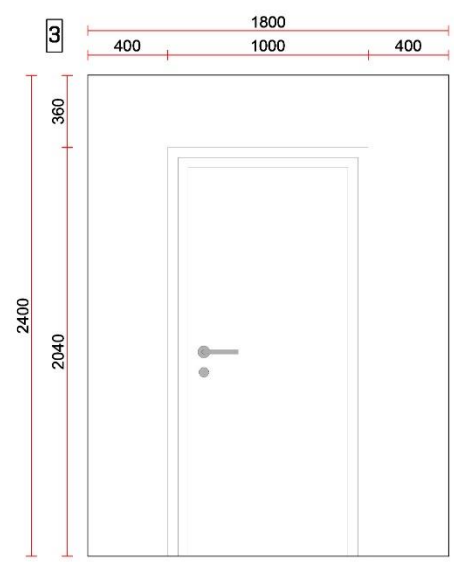
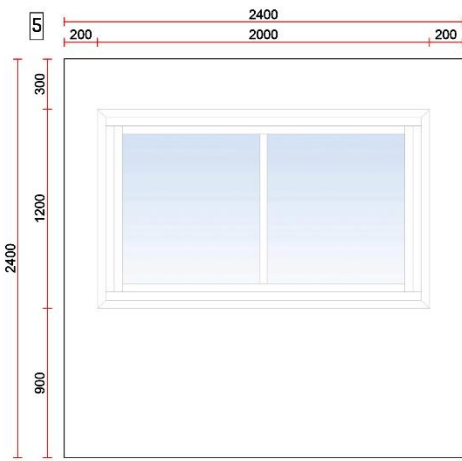
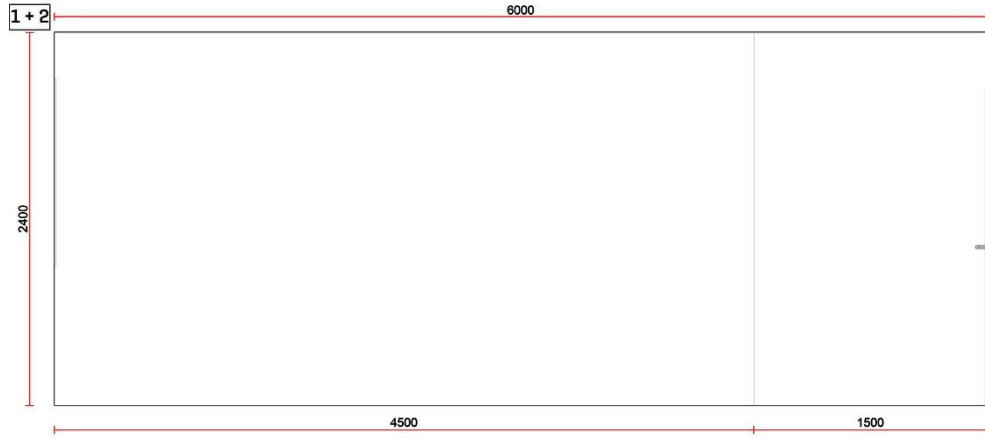


MEASURING GUIDE FOR QUOTATION PURPOSES

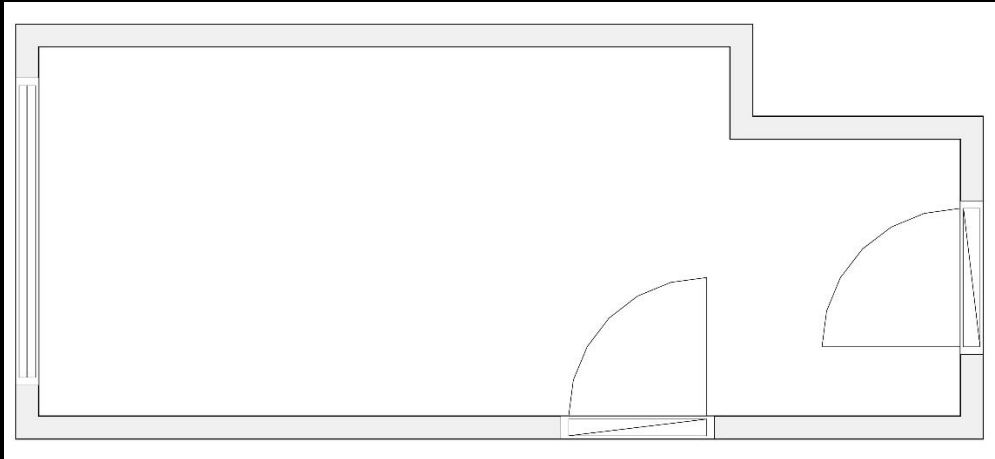


MEASURING GUIDE

Follow these steps to allow us to design and quote you the kitchen that suits your room perfectly.

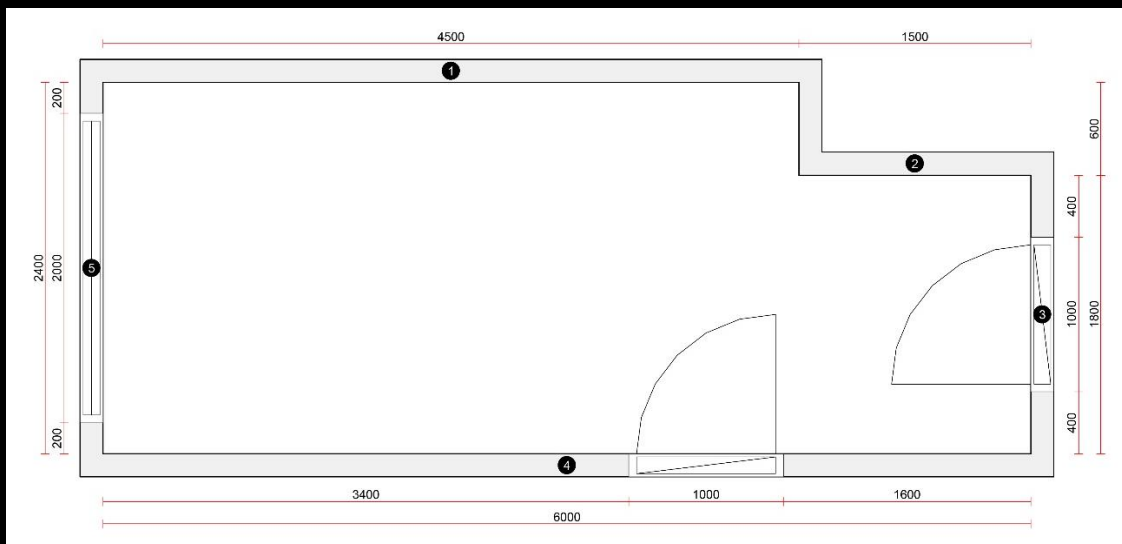
You will need: Tape measure, pencil, paper (graph paper included in this guide)

Step 1:



Draw an outline plan of your room, marking all openings of doors, windows, etc. where appropriate.

Step 2:



Name/Number the walls of your space.

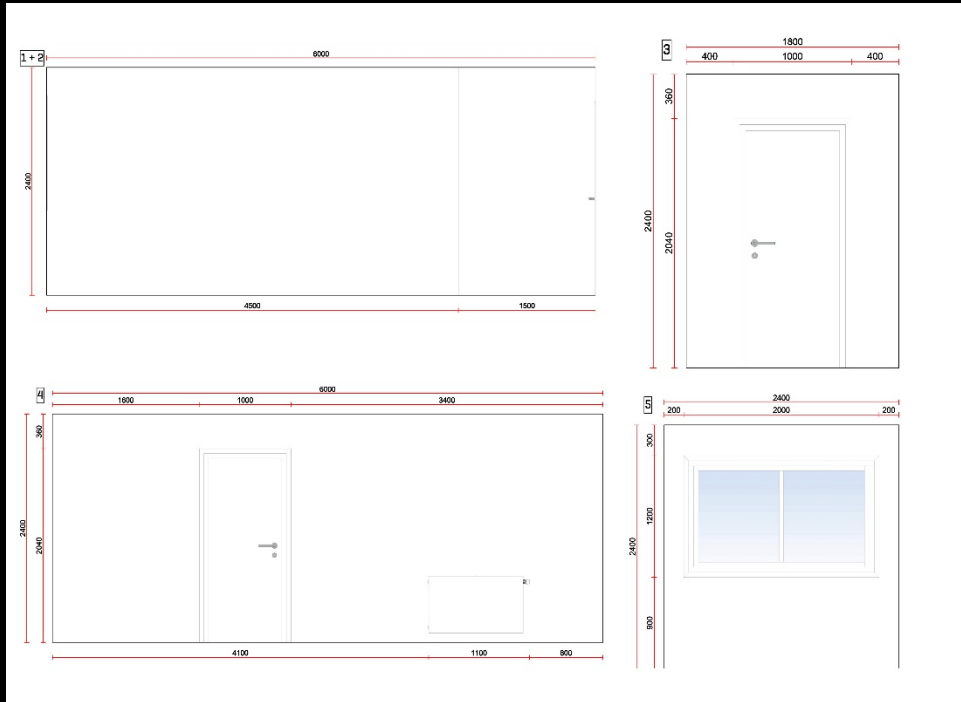
For each wall measure the following:

1. The full length of the wall
2. The width and distance between any openings (windows, doors, etc.) and their position on the walls. Ensure to include any frames or architraves of doors or windows.

Try to measure as precisely as possible, but do not despair! We will do a check-measure with laser before any order is placed.

MEASURING GUIDE

Step 3:



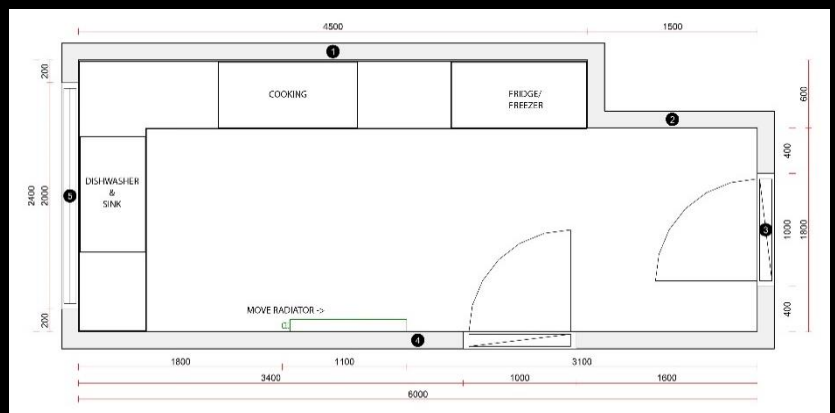
Draw elevations for each wall, tagging them with the according name from the outline plan.

For elevations, please measure the following:

1. Floor to ceiling height
2. Full height of any openings
3. Distance from floor to window
4. Mark on your plan location and position of any other relevant obstacles, existing fittings, etc:

For example:

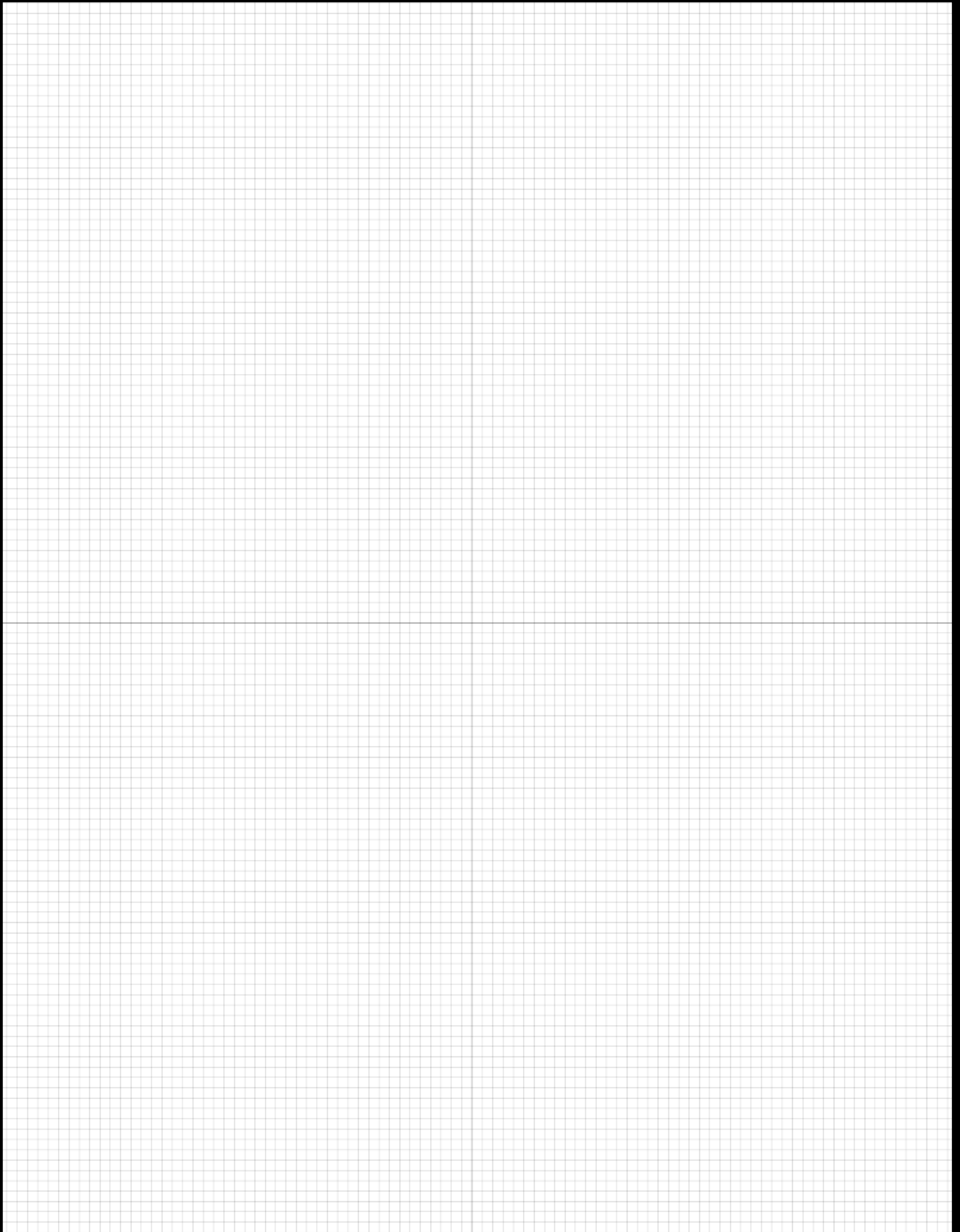
- Ceilings or height-restricted areas
- Steps
- Beams
- Switches
- Sockets
- Radiators
- Services (existing or proposed position):
 - Gas
 - Water
 - Waste



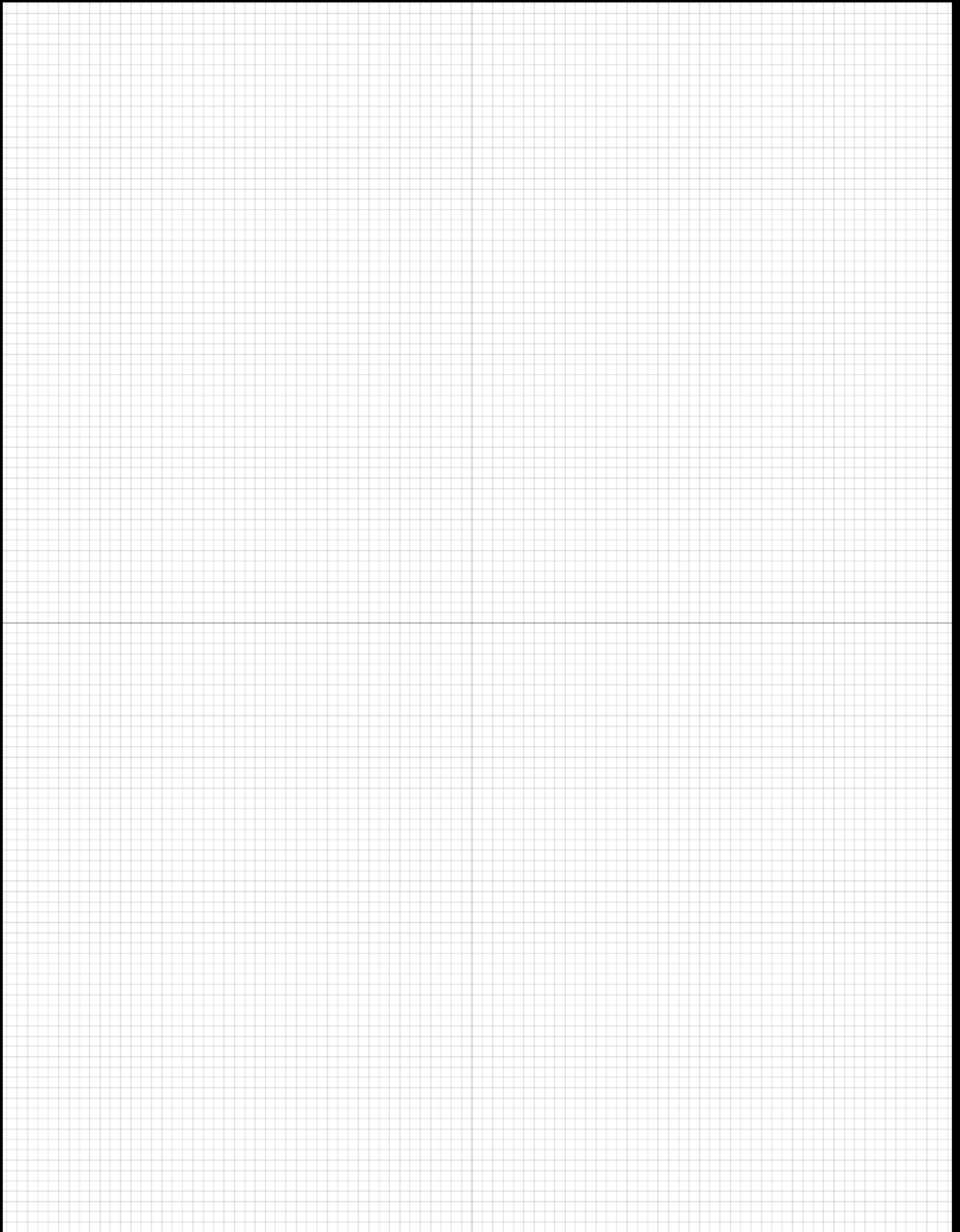
Step 4 (optional):

1. Mark out any layout ideas you already have.
2. Include details of proposed or existing finishes i.e. wall color, flooring, window frames, etc.
3. Take photos of the current situation, to give us a better feel of the room.

MEASURING GUIDE



MEASURING GUIDE



MEASURING GUIDE

Final Step:

Send your work to studio@pepperdesign.com.au and relax, while we start designing your kitchen.

CONTACT US

457 Church Street

Richmond VIC 3121

+61 3 9428 9427

studio@pepperdesign.com.au

pepperdesign.com.au